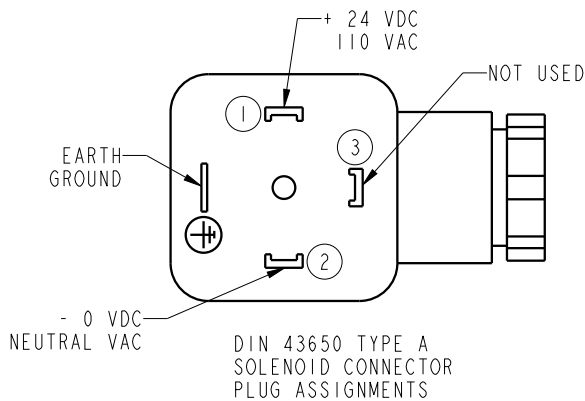
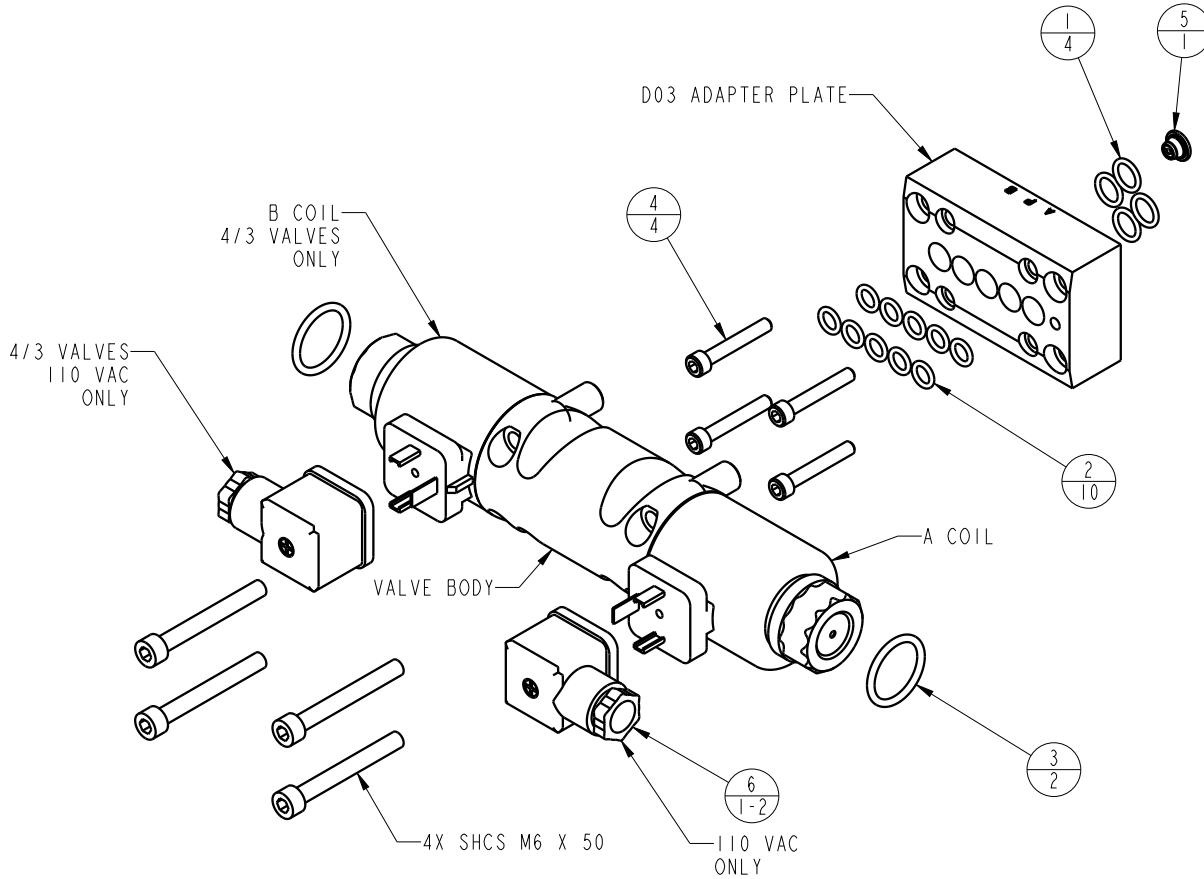


NO	QTY	PART NO	DESCRIPTION	STD SEAL KIT
1	4	39000031	O-RING, (-012)	X
2	10	39051200	O-RING, (6.75mm x 1.78mm x 10.31mm)	X
3	2	39051201	O-RING, (-118)	X
4	4	21411027	SOCH, 10-24 X 1-1/4, ALY	N/A
5	1	70343571	VALVE, CHECK, P-PORT, ER 13	N/A
6	1-2	28731107	CONN, DIN, 110 VAC, RECTIFIED	N/A
N/A	N/A	60701007	KIT, SEAL, VALVE, D03, ALL	NOTED

NOTE:
 1. MAX FLOW RATE: 6.6 GPM (25 LPM).
 2. MAX PRESSURE: 5800 PSI (400 BAR).
 3. SOLENOID POWER: 30 WATTS EACH.



PARTS LIST



VEKTEK, INC.
 1334 E. SIXTH AVE. P.O. BOX 625
 EMPORIA, KS. 66801 U.S.A.

PARTS LIST, VALVE, D03, ALL

ASSEMBLIES AFFECTED
 71123526, 71123546,
 71123528, 71123548,
 71112504, 7112506,
 71115502, 71115504

SIZE A
 PL7138

REV A

A	5349	RELEASE	KR	06/14/24
REV	IN ACCORDANCE WITH ECN	EFFECTIVE DATE	REVISED BY	DATE
DRW BY:	KR	DRAWING STATUS: Released		
DATE:	06/14/24	PRODUCTION APPROVED FOR RELEASED STATUS ONLY		